



Chapter 2: Migration

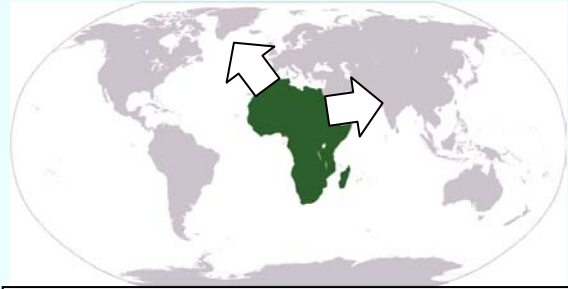
Migration:	As old as human beings itself
Reasons:	Push factors Pull factors.....
Push factors:	War, terrorism, hunger, poverty
Pull factors:	Wealth, jobs

The migration of large groups of population is as old as the history of human beings itself. The reasons were often the same ones: The increase of population, hunger and environmental factors, but never before so many people were fleeing because of poverty, force and destruction of environment as in our days. Migration is not only a disaster for the humanity but also a requirement for the development of today's cultures. But it is difficult to get some information about the migration of our Stoneage ancestors. Therefore they tried to reconstruct the human genealogical tree by help of manor analyses to understand the migration movements. Three theories were developed:

"Multiregionales Modell": Within 20000 years human races have developed on different continents:

"Out of Africa Modell": The origin of humanity is located in Africa.

"Gene flow-Modell": The modern human being developed by mixture, caused by migration, of different prehistoric genetic lines.



Out of Africa Modell

Up to now it is not proved which model describes the past best but it is sure that our ancestors began to migrate sometime. About 10000 before Christ they moved from Asia to America. But what made the homo sapiens migrate? Probably it was the hunger which forced the human beings to migrate, because the skeletons of that time were too small which referred to a lack of food. But up to now the reason is not quite clear. Perhaps the



Pull factors: fertile grounds

increasing population caused lack of space. People had to find a way out or

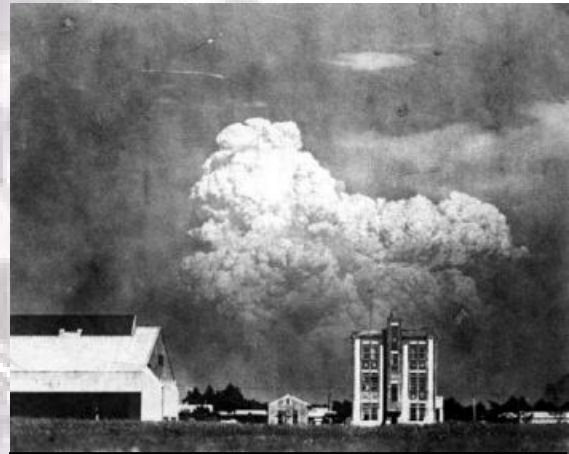


they destroyed the base of their life by shooting too many animals.

Among other things there was the hope of a better life, at many places they found better conditions and increased quickly. The demographic increase serves for the protection of the human race because the more individuals there are the more it is probable to survive epidemics and natural disasters. At the beginning of the neolithic age about 7000 years ago the living space became smaller by environmental changes but the decline of living space didn't cause a decline but an increase of the world's population: Our ancestors moved to the river valleys, became established and began to grow corn. So the need of place was diminished and as a consequence the humanity increased very quickly. During the neolithic age there lived about 3,5 million people, in the year 5000 about 12 million people and in the year 3000 already 30 millions.

The need of place and calories of the increasing humanity was guaranteed for a long time by the developing agriculture. But already during the 17th century the produce of food was not

sufficient and once again the limit of population increase was reached.



push factors: war is one reason for migration

In the 1764 the steam engine was invented and the industrial production increased enormously. At that time the agricultural period came to an end and the industrial revolution began. The impoverished people moved to the towns looking for work in factories. So more people could be nourished than by agriculture and the population increased to thousand millions. About 1600 there lived about 10% of the world's population (5 millions) in Europe. Conclusion: Overpopulation is relative, it does not depend on the number of individuals living on a special place but on the conditions of life.

Most of the people were living better than ever before. Due to technical development they had enough bread, clean drinking water and medicine. So



the mortality of children was reduced and the average age became higher and the world population grew more and more. The Colonisation served as a valve, because many people for example adventurers, beggars and public servants moved to Africa, Asia and America.

At the beginning of the 19th century the increase of the population stopped. This stabilization of population is called "demographic change".

First the industrialization caused better conditions of life (decrease of babies' mortality and higher life expectancy). It was first linked to the increase of population.

Secondly the foundation of welfare states caused renunciation of many children. These states established the social and pension insurance as a result of the high unemployment and

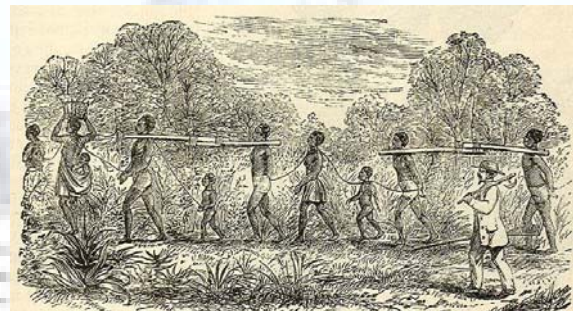


Pull factors: high industrial standards

mass poverty. The new type of old-age pension made abundance of children useless and besides children cost

money now, because they had to go to school, this meant renunciation for the parents. As a consequence of girls' higher education the birth rate still went down.

The colonisation was the precondition for the "demographic change" in the "third world" because it brought medical and sanitary conditions as vaccines, water pumps even in far away villages followed by the decrease of children mortality, but the second step did not follow because there was neither old-age pension nor education.



Slave transport

The experts are disputing how to get a stabilisation of the population. For a long time the industrialisation seemed to be the only possibility for improvement of conditions of life, to raise the level of education and to decrease the birth rate. Nowadays the concept of "sustainable development", economy, taking care of resources, and programs of birth control are placed into the foreground.



Besides the third world suffers from the consequences of colonisation because it was developed without taking care of ethnical, religious and economical problems. After having become independent many of these states suffered from controversial frontiers, no political legitimacy and economical underdevelopment.

In the last 50 years there were about 200 conflicts and wars in which millions of people were murdered and banished. For example Africa: Here the fight for land, money and mineral resources was ideologised and the east-west conflict of the great powers continued, fields were destroyed, men were murdered and women and children were kidnapped.

The UN Commissary Mary Robinson explained in 1999: " 90% of the victims are civilians (unarmed children, women and men, old and ill people and refugees).

The end of the terror is not within view. The causes for the increasing stream of refugees are post-colonial poverty and political conflicts, furthermore life has become more difficult and more dangerous in many countries in the last decade.



Refugee camp in Thailand



Refugee camp in Sudan